
patelbrown

NADA House | Alexa Hatanaka, Maya Fuhr, Shaheer Zazai



Alexa Hatanaka

Looks like Water, 2019

Linocut on handmade washi made by artist

17 x 22 in.

43.2 x 55.9 cm

\$ 4,000.00 CAD



Alexa Hatanaka

Kamiko Hat, 2020

Kakishibu and Konnyaku treated off-cuts of relief printed washi

4½ x 11 x 6½ in.

11.4 x 27.9 x 16.5 cm

\$ 3,000.00 CAD



Alexa Hatanaka

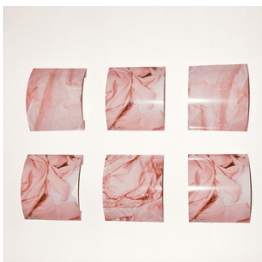
Kamiko Hat, 2020

Kakishibu and Konnyaku treated off-cuts of relief printed washi

5½ x 12 x 6 in.

14 x 30.5 x 15.2 cm

\$ 3,000.00 CAD



Maya Fuhr

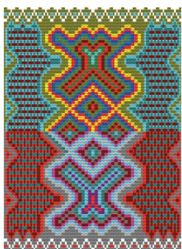
Washing No. 1, 2, and 3, 2019

Aluminum print

13 x 12 x 4 in.

33 x 30.5 x 10.2 cm

\$ 6,000.00 CAD



Shaheer Zazai

1114.2, 2019

Digital Print on Watercolour Paper

14 x 11 in

\$ 400.00 CAD



Maya Fuhr

Production Line, 2017

Photograph on aluminum

22 x 16 x 8 in.

55.9 x 40.6 x 20.3 cm

Private Collection



Maya Fuhr

A Look, 2019

Marbled velvet

36 x 25 1/2 in

\$ 1,250.00 CAD



Maya Fuhr

Chanel Givency Prada Louis Vuitton Value Villagé,
2021

Photograph on aluminum

20 x 16 in.

50.8 x 40.6 cm

Contact for price



Maya Fuhr

Nylon No. 1, 2019

Aluminum print

12 x 13 x 4 in.

30.5 x 33 x 10.2 cm

\$ 2,000.00 CAD



Shaheer Zazai

1114.1, 2021

Jacquard loom

60 x 50 in.

152.4 x 127 cm

\$ 2,400.00 CAD