

SHELLYNE RODRIGUEZ

NADA House | Governors Island

May 8 - August 1, 2021

EFA Robert Blackburn Printmaking Workshop is pleased to present printshop member and SIP Fellow '19, **Shellyne Rodriguez** for the third edition of The New Art Dealers Alliance (NADA) House on Governors Island with 66 other galleries, non-profits, artist-run spaces, and curators, presenting over 100 artists.

NADA House will be open Fridays, Saturdays, and Sundays, 11am–5pm.





Artist, educator, writer, and community organizer, Shellyne Rodriguez is based in the Bronx. Her practice utilizes text, drawing, painting, collage and sculpture to depict spaces and subjects engaged in strategies of survival against erasure and subjugation. Exhibited work includes painting and white-ground etchings, drypoint with chine collé.



EFA ROBERT BLACKBURN PRINTMAKING WORKSHOP

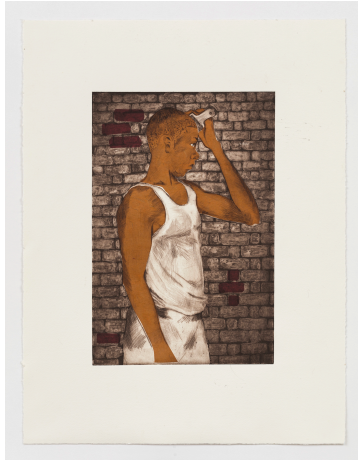
323 West 39th Street, 2nd Fl. New York, NY 10018 • rbpmw-efanyc.org • (646) 416-6226

A program of The Elizabeth Foundation for the Arts

SHELLYNE RODRIGUEZ

NADA House | Governors Island

May 8 - August 1, 2021



Boy with Wave Brush 2021

White-ground etching, drypoint and chine collé
on Hahnmühler paper

Sheet: 18 x 14 in.

Unique

\$900



Seated figure with throwie 2021

Soft-ground etching and chine collé
on Hahnmühler paper

Sheet: 21 x 14 in.; Plate: 12 x 7 ¾ in.

Edition of 2

\$900



La Doña Raises her Cane 2019

Oil on Linen

48 x 48

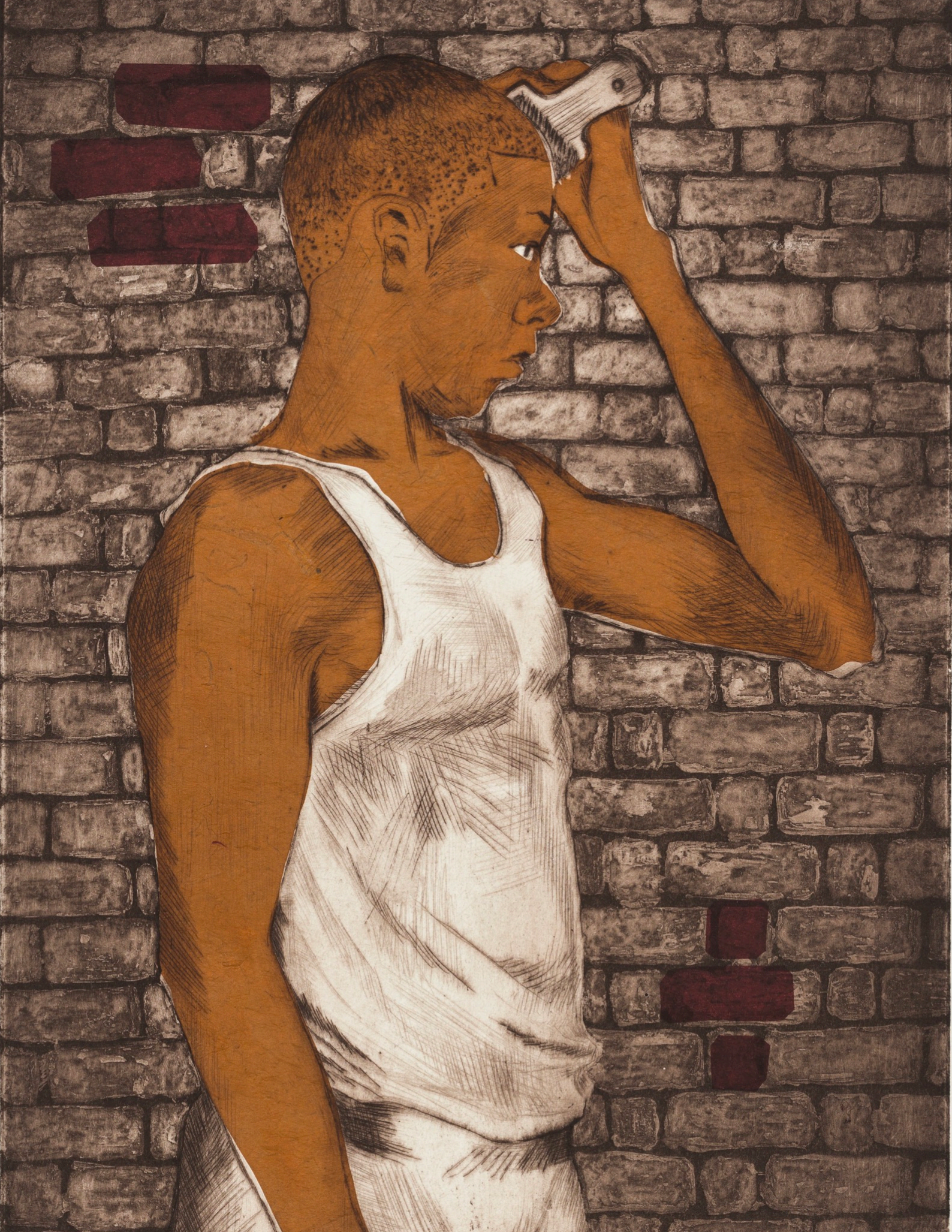
\$5,000



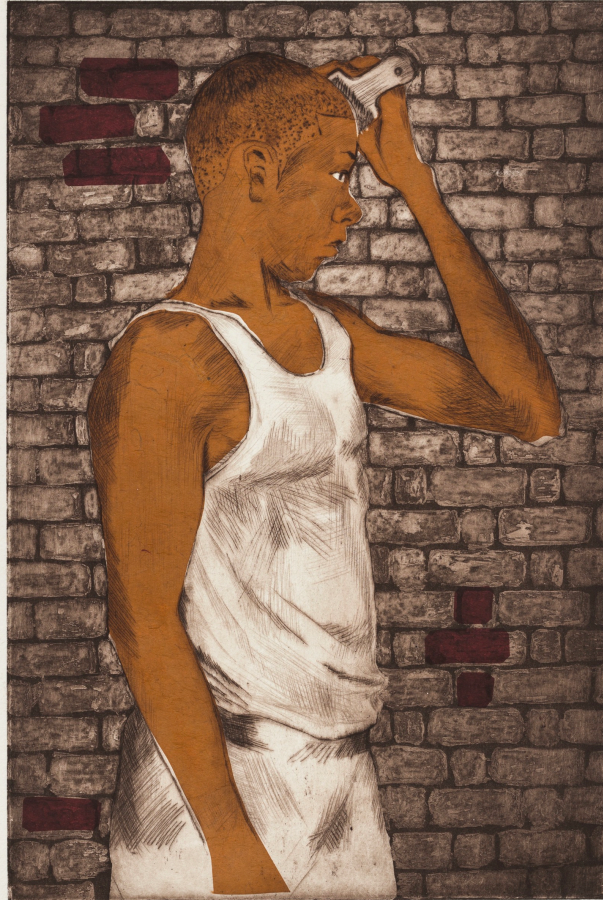
EFA ROBERT BLACKBURN PRINTMAKING WORKSHOP

323 West 39th Street, 2nd Fl. New York, NY 10018 • rbpmw-efanyc.org • (646) 416-6226

A program of The Elizabeth Foundation for the Arts



SHELLYNE RODRIGUEZ



Boy with Wave Brush 2021

White-ground etching, drypoint and chine collé on
Hahnmühler paper

Sheet: 18 x 14 in.

Unique

\$900

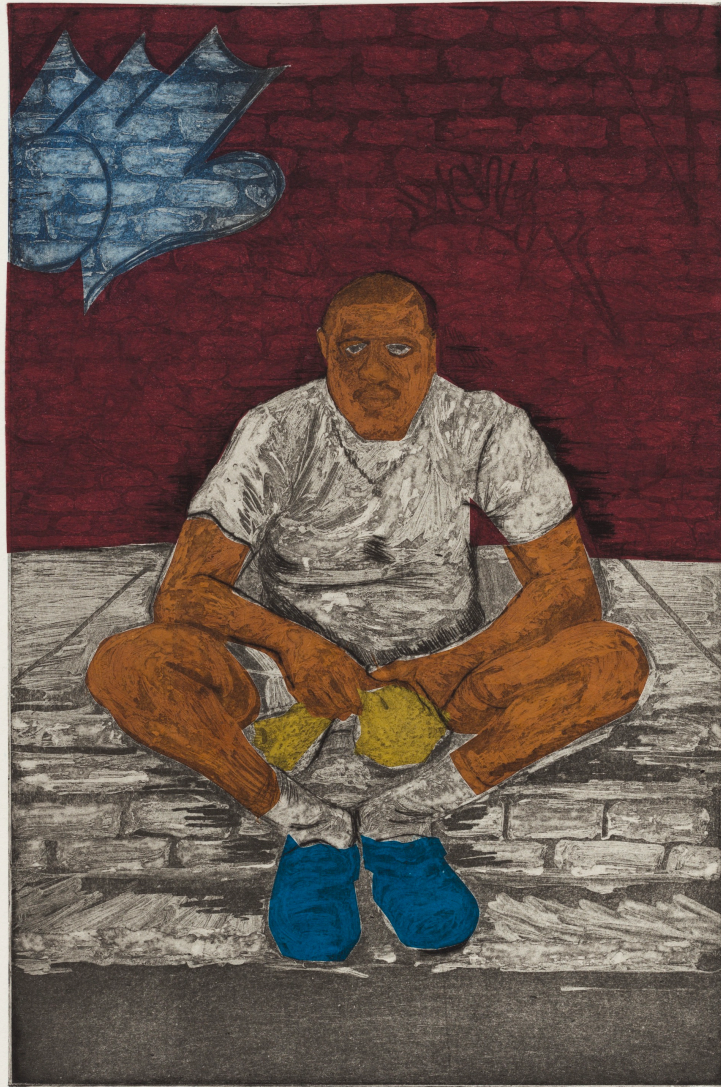


EFA ROBERT BLACKBURN PRINTMAKING WORKSHOP

323 West 39th Street, 2nd Fl. New York, NY 10018 • rbpmw-efanyc.org • (646) 416-6226

A program of The Elizabeth Foundation for the Arts

SHELLYNE RODRIGUEZ



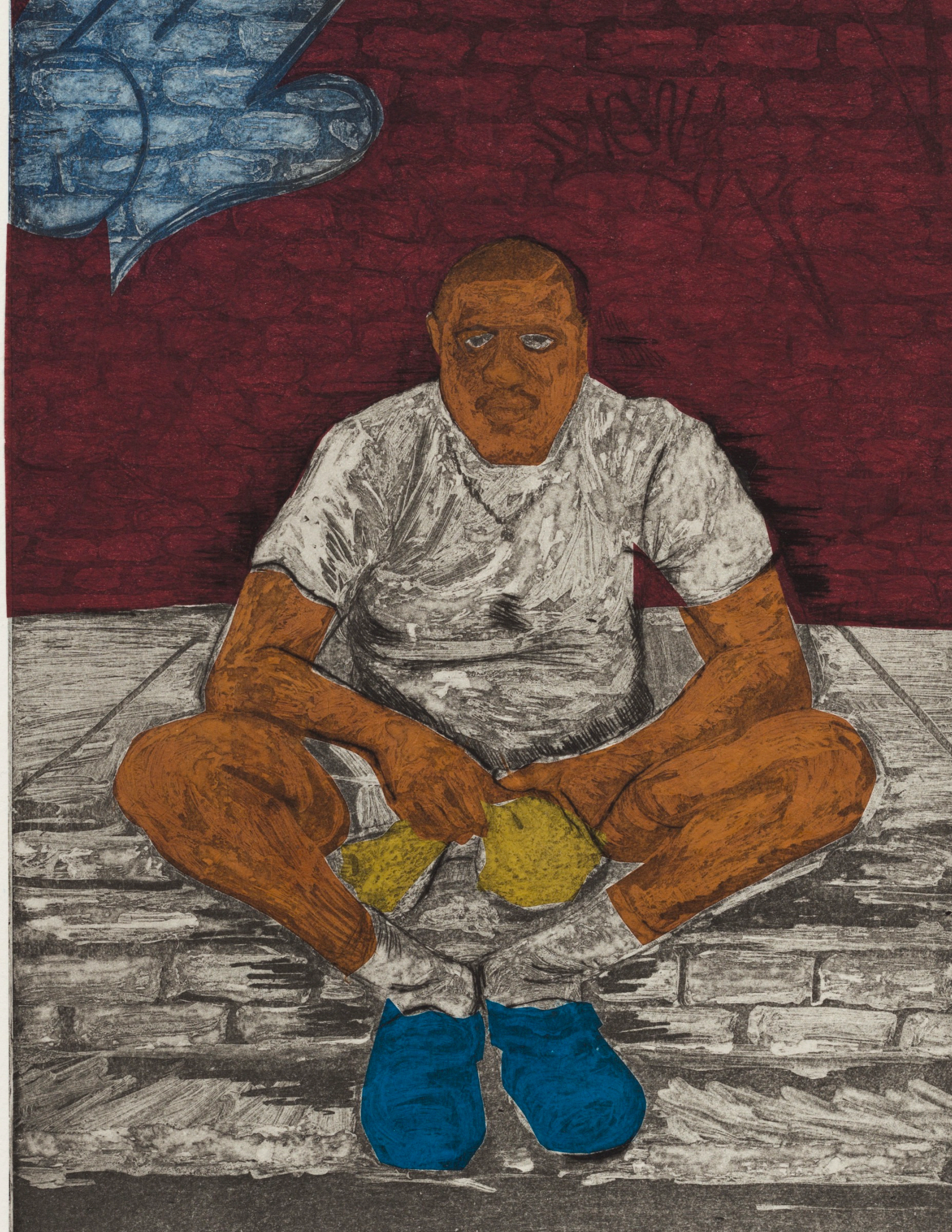
Seated figure with throwie 2021
Soft-ground etching and chine collé
on Hahnmühler paper
Sheet: 21 x 14 in.; Plate: 12 x 7 ¾ in.
Edition of 2
\$900



EFA ROBERT BLACKBURN PRINTMAKING WORKSHOP

323 West 39th Street, 2nd Fl. New York, NY 10018 • rbpmw-efanyc.org • (646) 416-6226

A program of The Elizabeth Foundation for the Arts





La Doña Raises her Cane 2019

Oil on Linen

48 x 48

\$5,000



EFA ROBERT BLACKBURN PRINTMAKING WORKSHOP

323 West 39th Street, 2nd Fl. New York, NY 10018 • rbpmw-efanyc.org • (646) 416-6226

A program of The Elizabeth Foundation for the Arts

Mission

EFA Robert Blackburn Printmaking Workshop (RBPMW) is a co-operative printmaking workspace that provides professional-quality printmaking facilities to artists and printmakers of every skill level. We are committed to inspiring and fostering a racially, ethnically, and culturally diverse artistic community dedicated to the making of fine art prints in an environment that embraces technical and aesthetic exploration, innovation and collaboration. We seek to improve the overall quality of fine art printmaking by providing low cost, unfettered access to printers, equipment, and education. Robert Blackburn's vision of a welcoming creative environment with a spirit of openness serves as the backbone of the workshop today.

History

An influential teacher, celebrated collaborator, and pioneering artist, Robert Blackburn (b.1920-d.2003) initiated The Printmaking Workshop in Chelsea in 1947 by acquiring his own lithography press. He ran it as collaborative atelier for 24 years, until 1971, when he incorporated "The Printmaking Workshop" as a not-for-profit organization. The son of Jamaican immigrants, Blackburn created a welcoming space for all artists to learn, experiment, and exchange. His shop became a magnet for diverse international participants, resulting in a richly varied graphic output unlike any other workshop in the United States. Although Blackburn taught widely, was a highly respected color lithographer, and served as the first master printer for ULAE (Universal Limited Art Editions, where he printed the first 79 editions for artists including Helen Frankenthaler, Grace Hartigan, Jasper Johns, Robert Rauschenberg, and Larry Rivers) he remained dedicated to his own Printmaking Workshop. Thirty-two years later in 2002, as he began to suffer from health issues, Blackburn closed The Printmaking Workshop. He passed away in 2003. The Robert Blackburn Printmaking Workshop re-opened in 2005 as a program of the Elizabeth Foundation for the Arts, to continue to make space for diverse artists to experiment in the graphic arts, in the spirit of Robert Blackburn.

Archives

There are over 4,000 artists with over 20,000 prints in the archives. Artists include: Elizabeth Catlett, Emma Amos, Charles White, Krishna Reddy, Faith Ringgold, Melvin Edwards, among others. To view the archives, please contact: essye@efanyc.org to make an appointment.

For inquires, please contact: essye@efanyc.org



EFA ROBERT BLACKBURN PRINTMAKING WORKSHOP

323 West 39th Street, 2nd Fl. New York, NY 10018 • rbpmw-efanyc.org • (646) 416-6226

A program of The Elizabeth Foundation for the Arts